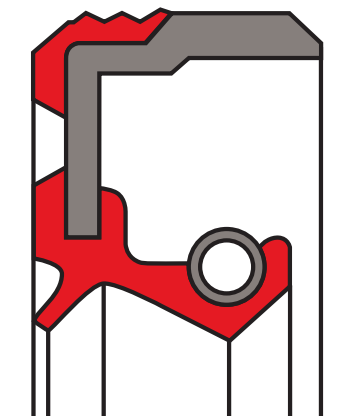


# oil seal R71-B

## seal spec



### description

the R71-B is seal with partially rubber covered outer diameter. these seals are designed to assure a high assembly stiffness and a good static sealing together with a good heat transfer. the additional dust lip protects the main sealing lip against dust and other fine solid contaminants, therefore these types are recommended for use in polluted environments. to achieve a long lifetime a suitable lubricant between the two sealing lips should be applied.

### application



### category of profile

molded/standard/trade product only.

### single acting rotary shaft seal

### area of application

- automotive "power-train" and "drive-train"
- automotive servo-pumps
- high speed transmission
- machine tools

### advantages

- good static sealing and stiffness (no pop-out effect)
- good thermal expansion compensation
- good heat transfer
- effective protection against air side contaminants

### media

mineral and synthetic oils (CLP, HLP, APGL etc.)

### operating parameters & material

material			temperature	max. surface speed	max. pressure
sealing element*	metal insert**	spring**			
s-mart NBR (70 shore A & 70 shore A)	mild steel DIN 1624	spring steel DIN 17223	-40°C ... + 100°C	≤ 30 m/s	0,5 Bar (0,5 MPa)
s-mart FKM 75 shore A		(rust & acid-resistant steel DIN EN 1.4571)	-30°C ... + 200°C	≤ 25 m/s	

the stated operation conditions represent general indications. it is recommended not to use all maximum values simultaneously.

surface speed limits apply only to the presence of adequate lubrication film.

\* special grades and other materials (ACM, EACM, EPDM, HNBR, MVQ) on request

\*\* metal insert, and spring as well, can be supplied in different materials on request.

**surface quality**

surface roughness	Rtmax [ $\mu\text{m}$ ]	Rz [ $\mu\text{m}$ ]	Ra [ $\mu\text{m}$ ]
shaft	$\leq 6,3$	$\leq 1,0-5,0$	$\leq 0,2-0,8$
bottom of groove	$\leq 25$	$\leq 10-25$	$\leq 1,6-6,3$

hardness 45 ... 60 HRC

**tolerance recommendation**

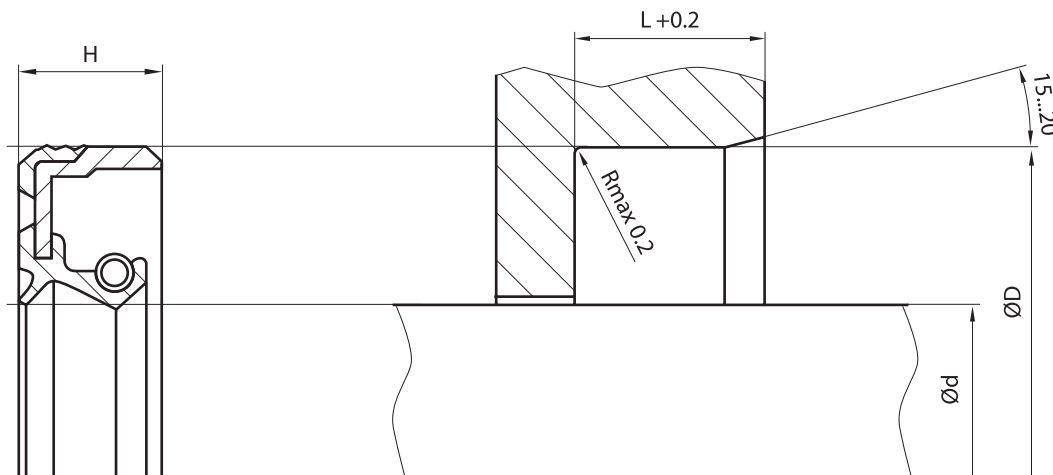
seal housing tolerances	
$\varnothing d$	f8/h11
$\varnothing D$	H8

**fitting & installation**

suitable tool should be used for installation. it is recommended that the installation housing is designed to provide the rotary shaft seal with axial support.

**seal & housing recommendations**

*please note that we are able to produce those profiles to your specific need or any non standard housing. for detail measurements, please see seal-mart catalog...*



*don't hesitate to contact our technical department for further information or for special requirements (temperature, speed etc.), so that suitable materials and/or designs can be recommended.*